

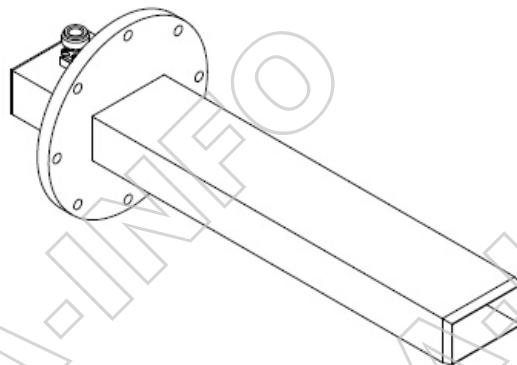
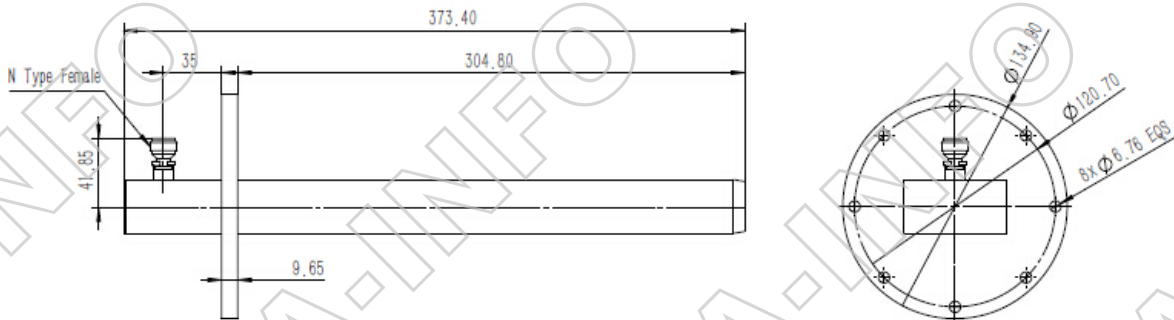
Technical Specification



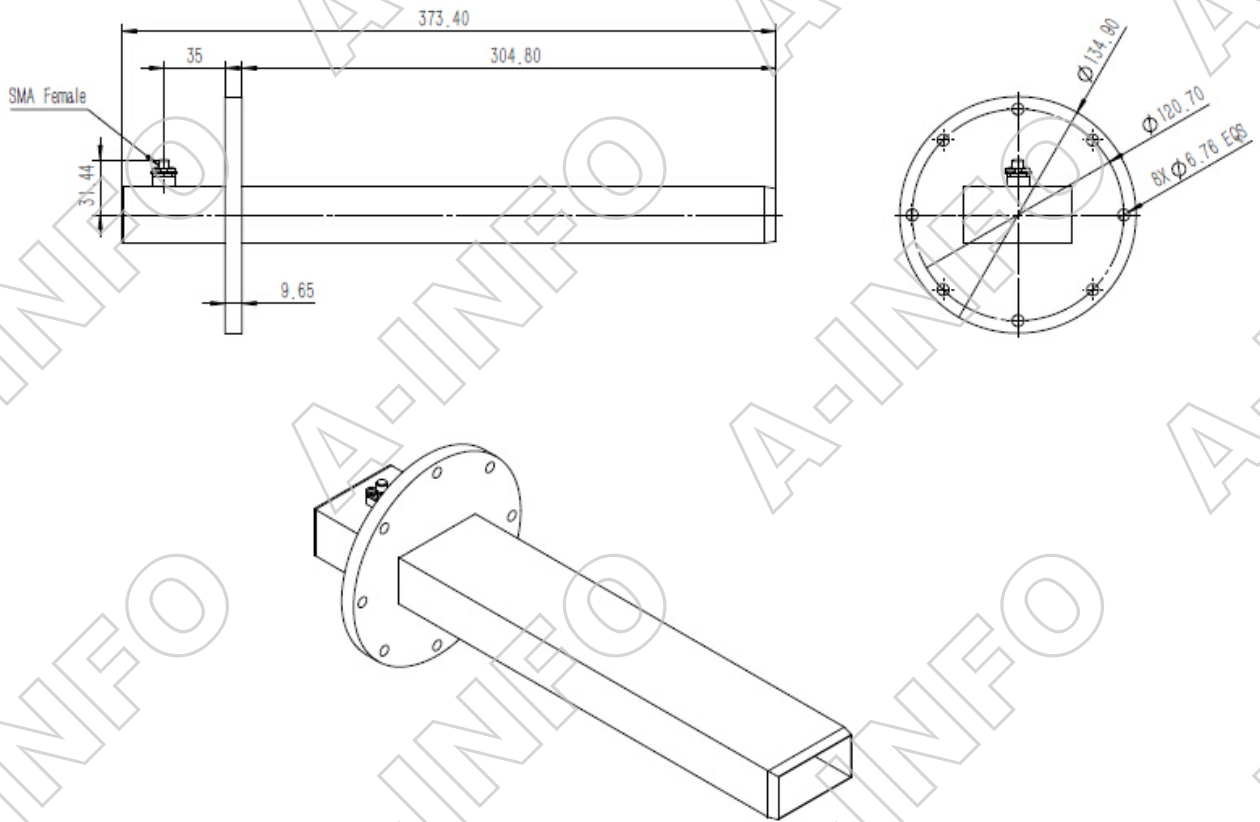
EIA WR	WR229
Frequency Range(GHz)	3.30-4.90
Gain(dB)	5 Typ.
VSWR	2.0 Typ.
Connector	N-F/SMA-F
Material	Al
Size(mm)	Φ134.90 x 373.40
Net Weight(Kg)	0.65 Around

Outline Drawing (Size: mm)

N Type Female Output



SMA Type Female Output



Test Results

VSWR

